

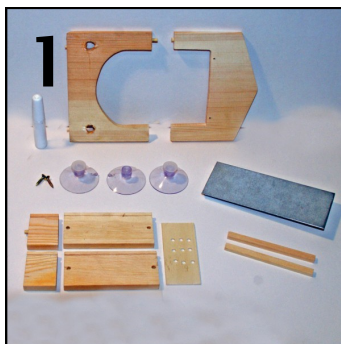
# Build your own Bird Feeder



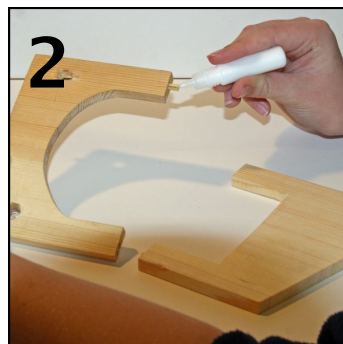
Great fun for kids and adults alike, use this simple kit to build your own Window Bird Feeder. Once complete you will be able to see garden birds close up as they feed just outside your window. The feeder attaches to your window using plastic suckers. To build your feeder follow these step by step instructions.



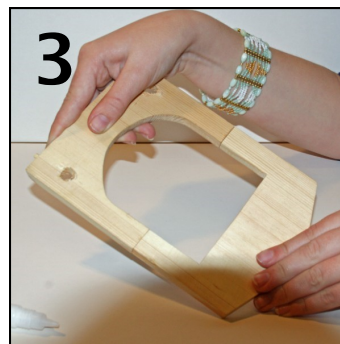
*Some adult help might be needed. A small cross-head screwdriver is required (not supplied).*



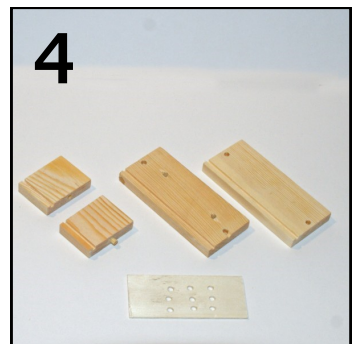
1  
Work on a flat surface with a protective covering. Lay out the components.



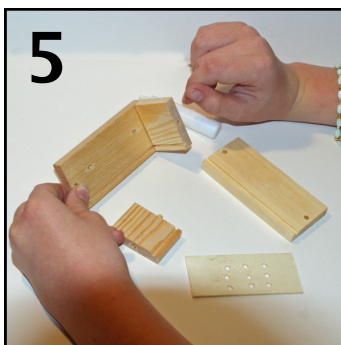
2  
Join the two main panels using two wooden dowels and glue.



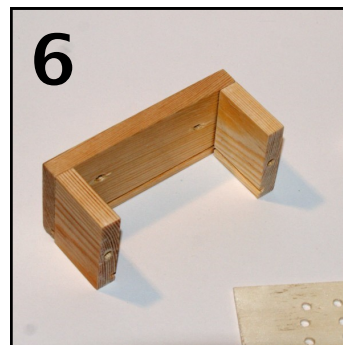
3  
Push the panels firmly together.



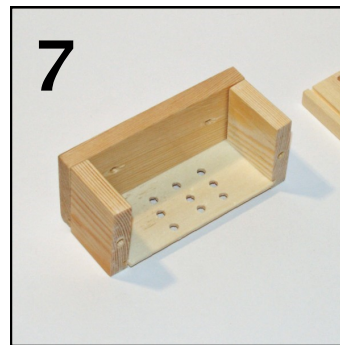
4  
Find all five pieces that make up the feeder tray.



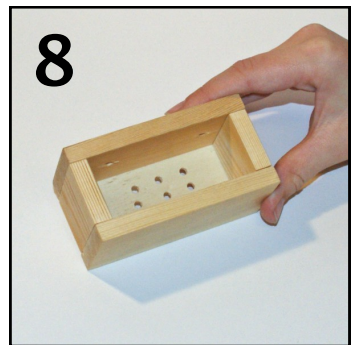
5  
Attach a long side of the tray to a short side using a dowel and glue. Make sure the grooves are on the inside at the base.



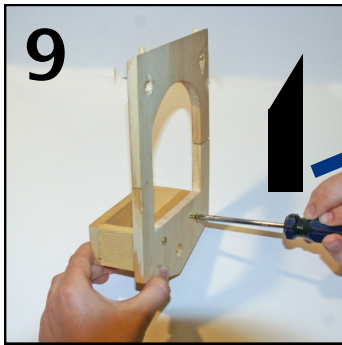
6  
Now attach the second short side in the same way.



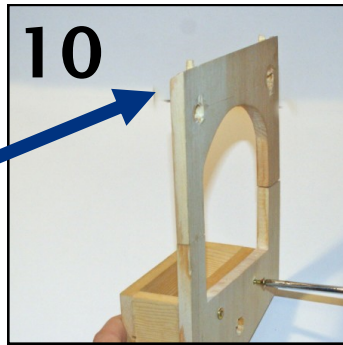
7  
Slide in the base of the tray applying glue along the edges.



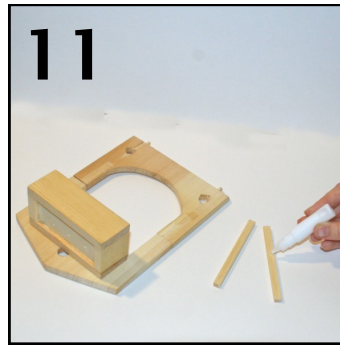
8  
Push on the last of the long sides to complete the feeder tray.



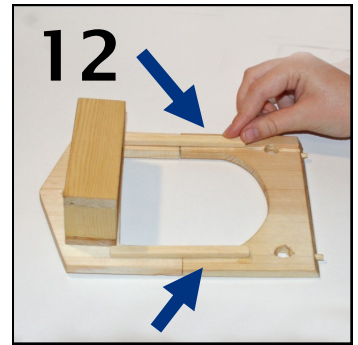
**9**  
Join the feeder tray to the main panel with 2 screws (provided). There are guide holes in the main panel.



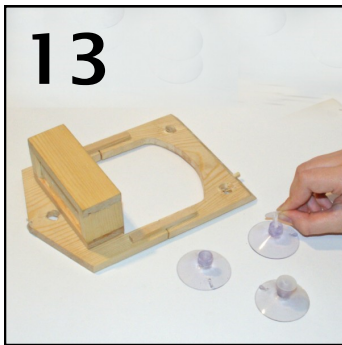
**10**  
**IMPORTANT** Make sure that the slope at the top faces forwards.



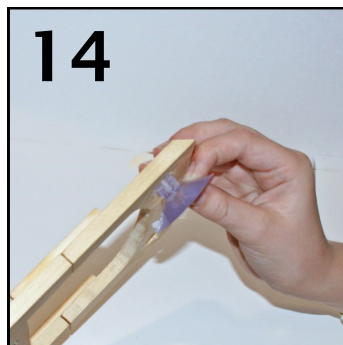
**11**  
Lay the feeder on its back. You will now need the two side strips.



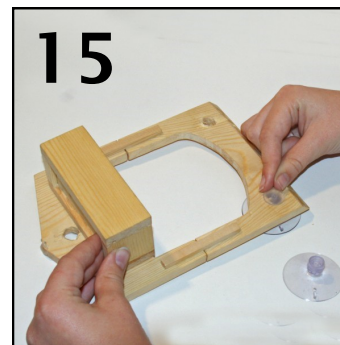
**12**  
Glue these into place and leave to dry for 1 hour.



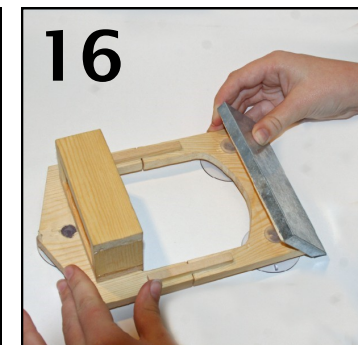
**13**  
Once dry, prepare the plastic suckers, pull the plug out of each sucker.



**14**  
There are 3 holes in the feeder for the suckers. Push each sucker in from the back.

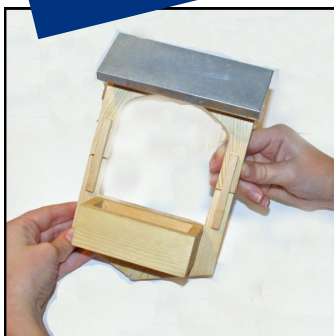


**15**  
To hold the sucker in place, glue the plug in from the front.



**16**  
Finally attach the roof using the two remaining dowels and glue. Leave to dry overnight.

## CARE TIPS



To extend the life of your feeder you can treat it with bird friendly water-based preservative.



Bird feeders should be kept clean. Regularly remove it from the window and remove any old feed or debris.



Use the handy tin to store your bird seed.

Produced by Apples to Pears Ltd., Stroud, U.K.

[www.applestopears.com](http://www.applestopears.com)

PLEASE KEEP THESE INSTRUCTIONS FOR FUTURE REFERENCE

Copyright © Apples to Pears Ltd 2011. RECOMMENDED AGE 6+

apples   
to pears



**WARNING** CHOKING HAZARD Small parts, not suitable for children under 3 yrs.  
FUNCTIONAL SHARP POINT Adult supervision recommended.

Keep adhesive away from eyes & protect skin. Do not swallow or inhale. If adhesive enters eyes do not rub, wash with plenty of clean water. Wash skin with soap and water. Seek medical advice if any irritation develops or persists.